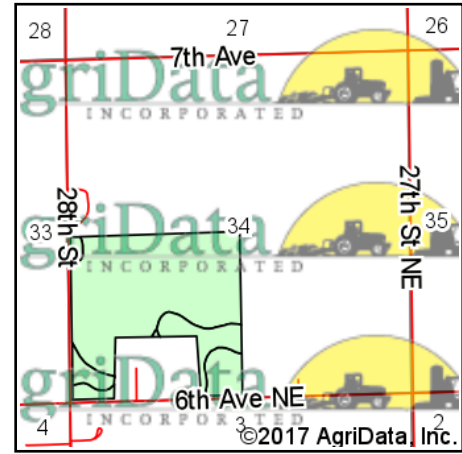
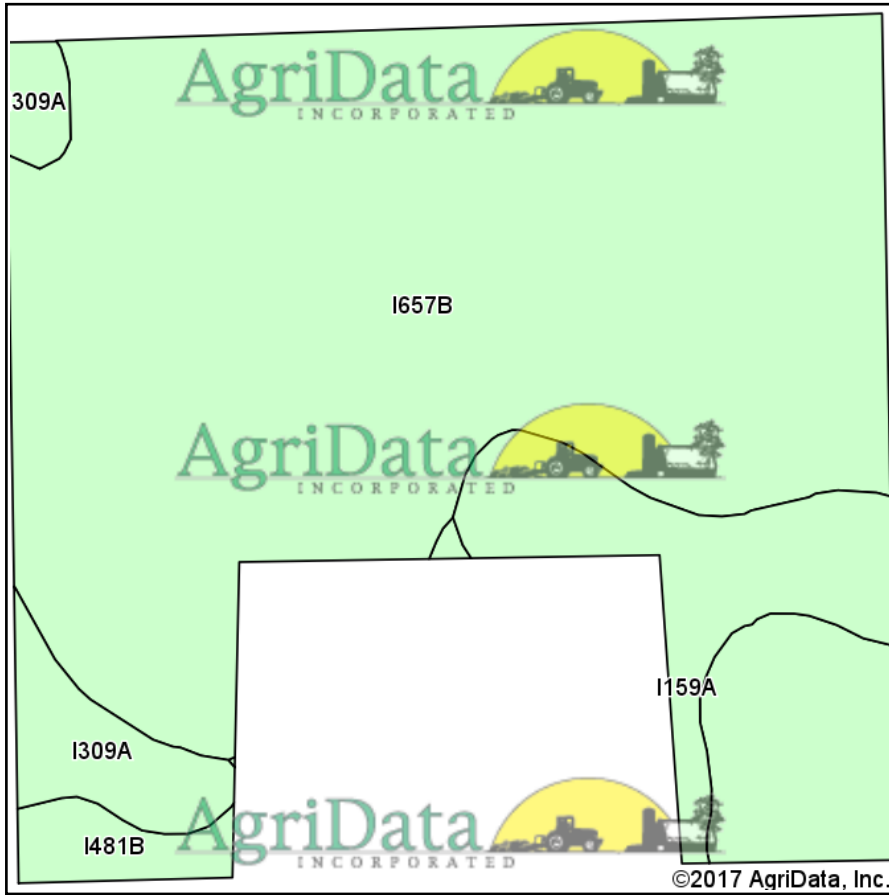


# Soils Map



State: **North Dakota**  
 County: **Grand Forks**  
 Location: **34-150N-53W**  
 Township: **Pleasant View**  
 Acres: **123.44**  
 Date: **6/8/2017**

**UGLEM LAW P.C.**  
 SHANNON P. UGLEM • Attorney at Law

Maps Provided By:  
  
 CUSTOMIZED ONLINE MAPPING  
 © AgriData, Inc. 2017 [www.AgriDataInc.com](http://www.AgriDataInc.com)



**Area Symbol: ND035, Soil Area Version: 20**

Code	Soil Description	Acres	Percent of field	Non-Irr Class *c	Irr Class *c	Productivity Index
I657B	Hecla fine sandy loam, 2 to 6 percent slopes	102.54	83.1%	IIIe	Ile	57
I159A	Wyndmere-Tiffany fine sandy loams, 0 to 2 percent slopes	11.58	9.4%	IIIe		70
I309A	Arveson loam, 0 to 1 percent slopes	6.29	5.1%	IIw		60
I481B	Hecla-Maddock fine sandy loams, 2 to 6 percent slopes	3.03	2.5%	IIIe	Ile	58
<b>Weighted Average</b>						<b>58.4</b>

\*c: Using Capabilities Class Dominant Condition Aggregation Method

Soils data provided by USDA and NRCS.